



OFF THE ROAD TIRE CATALOGUE

ADD: Xishui Industrial Zone, Dongying City, Shandong Province, China
Factory Export Department: Tel: 0086-546-6497221 Fax: 0086-546-6497528
Qingdao Export Department: Tel: 0086-532-55578663 Fax: 0086-532-55576863
Email: info@xingyuantire.com Web Site: www.xingyuangroup.com

Xingyuan group, founded in 1994, is one of the largest leading tyre enterprises in China. Xingyuan Group, a diversified business enterprise, is located in Guangro County within Shandong province. Currently we have more than 6800 employees, including over 680 engineering technicians, with a total capital of RMB 13 billion yuan. Xingyuan Group is ranked 24th in the World, according to the American "Rubber and Plastics News" magazine 2014's top 75 global tyre enterprises list.

Xingyuan Group specializes in tyre design and manufacture. We have, so far, developed 18 series, 160 sizes and 200 tread patterns within our range of all steel radial truck, radial and bias off the road and car tyres. We have been granted 67 patents in many parts of the World, including Europe, North America and South Africa.

Our leading brand names include ANNAITE, HILO, AMBERSTONE, XINGYUAN and GUANGDA. ANNAITE branded tyres are supplied to over 80 countries and regions. The well known HILO brand has been awarded the trademark for ongoing development and export by the Chinese Institute of Industry and Commerce.

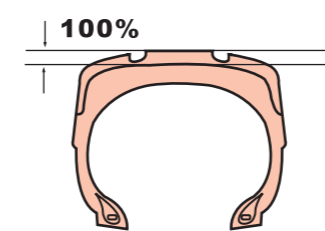
Recently, Xingyuan Group's production capacity of radial truck tyres reached 5.8 million units, radial OTR tyres at 200 thousand and passenger car at 12 million tyres per year. We work to our mission statement which is **"Quality is our life, and making our tyre a global world class brand"**. We have world class production and testing equipment to enable us to produce high quality product. Our tyres have passed certification by many well-known Technical Organisations and Quality Standards including DOT, ECE, REACH, CCC, GCC, SNI, BIS, ISO 9001, ISO14001 etc. Our products are sold to over 100 countries and regions, such as the Middle East, Southeast Asia, Africa, Europe, Latin America and The United States of America.

With our high quality product, competitive pricing, on-time delivery and superb after sales service we have a reputation of being a reliable, trustworthy enterprise supplying an excellent product, to both the domestic and export markets. We would like to invite you to join us with a view of developing a long term business relationship.

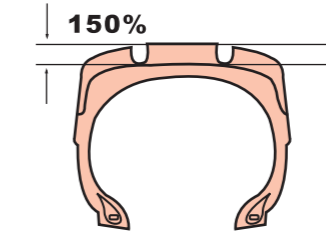


TRA CLASSIFICATION OFF-THE-ROAD TYRES

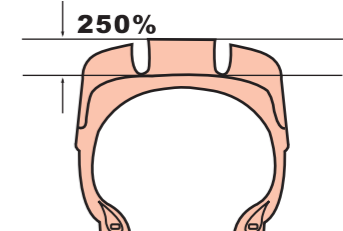
TRA CODE	TREAD TYPE	TREAD PATTERN
C-7	Suspention Regular	C7
E-2	Traction Regular	B05N,BGZN,BWYN
E-3	Rock Regular	B02N,LGDN,LOFN,LGXN,AN609
E-3/G-1	Rock Regular	G1
E-3/G-3	Rock Regular	G-3
E-4	Rock Deep Regular	BDTS,B03S,B04S,B04S2,B06S,BDRS,HLG01,HLG03,HLG06
IND-4	Deep Tread	B07S,M08S,BSCS
L-2/E-2	Traction Regular	B01N,BWYN/BWYNL,SNOWMASTER
L-2/G-2	Traction Regular	BLGN
L-3	Rock Regular	B01NL
L-3/E-3	Rock Regular	B01N,B02N,B02S,BXDN
L-3/G-1	Rock Regular	G1
L-3/G-2	Rock Regular	G2
L-4	Rock Deep Regular	MWS
L-4/E-4	Rock Deep Regular	LCHS
L-5	Rock Extra Deep Regular	LCHS+,MWS+,L5
L-5S	Smooth Extra Deep Regular	SMS+
R-4	Traction Regular	R-4



Regular Tread



Deep Tread



Extra Deep Tread

LOADERS, DOZERS, GRADERS



Pattern	TRA CODE	Loaders	Dozers	Graders
B01N/ B01NL	L-2/E-2 L-3/E-3 L-3	✓	✓	✓
B02N	E-3 L-3/E-3	✓	✓	✓
B02S	L-3/E-3	✓	✓	✓
BXDN	L-3/E-3	✓	✓	✓
LCHS	L-4/E-4	✓	✓	✓
LCHS+	L-5	✓	✓	✓
MWS	L-4	✓	✓	✓
MWS+	L-5	✓	✓	✓
SMS+	L-5S	✓		
BLGN	G-2 L-2/G-2			✓
G1	L-3/G-1 E-3/G-1	✓	✓	✓
G2	L-3/G-2	✓	✓	✓
L5	L-5	✓	✓	✓

Available Size

Size	B01N/ B01NL	B02N	B02S	BXDN	LCHS	LCHS+	MWS	MWS+	SMS+	BLGN	G1	G2	L5	SM6S+
12.00R24									✓					✓
13.00R24														
15.5R25	✓													
16.00R24										✓				
16.00R25		✓	✓											
17.5R25	✓			✓				✓	✓		17.5-25	17.5-25		
18.00R25									✓					
20.5R25	✓			✓		✓		✓	✓		20.5-25	20.5-25		
23.5R25	✓	✓		✓	✓	✓	✓	✓	✓		23.5-25	23.5-25	23.5-25	
26.5R25	✓	✓		✓	✓	✓	✓	✓	✓		26.5-25	26.5-25		
29.5R25		✓		✓		✓	✓	✓	✓					
29.5R29		✓			✓	✓	✓	✓	✓					
35/65R33					✓	✓	✓	✓	✓					
600/65R25			✓											
650/65R25			✓											
750/65R25			✓											
875/65R29			✓											
875/65R29			✓											



B01N B02N SMS+ SM6S+

B01N/B01NL



PATTERN CHARACTERISTIC

- Increased tread volume for additional wear life and resistance to damage.
- New sidewall design for enhanced reinforcement and protection.
- Robust shoulder design and strong casing reliability.

SIZE	STAR RATING	LOAD INDEX	TRA CODE	TREAD DEPTH (mm)	TYPE	Standard Rim (Rim Width & Flange)	DIAMETER (mm)	SECTION WIDTH (mm)	MAX LOAD (kg)	STANDER PRESSURE (bar)	MAX SPEED (km/h)	
B01N	15.5R25	★★	176/160	L-2/E-2	25	TL	12.00/1.3	1277	394	7100/4500	6.5/5.25	10/50
	17.5R25	★★	182/167	L-3/E-3	28	TL	14.00/1.5	1348	445	8500/5450	6.5/5.25	10/50
	20.5R25	★★	193/177	L-3/E-3	31	TL	17.00/2.0	1490	521	11500/7300	6.5/5.25	10/50
	23.5R25	★★	201/185	L-3/E-3	34	TL	19.50/2.5	1617	597	14500/9250	6.5/5.25	10/50
	26.5R25	★★	209/193	L-3/E-3	37	TL	22.00/3.0	1750	673	18500/11500	6.5/5.25	10/50
	20.5R25	★★★	193/177	L-3/E-3	31	TL	17.00/2.0	1490	521	16500/7300	6.5/5.25	10/50
B01NL	20.5R25	★★	193	L-3	31	TL	17.00/2.0	1490	521	11500	6.5	10
	23.5R25	★★	201	L-3	34	TL	19.50/2.5	1617	597	14500	6.5	10
	26.5R25	★★	209	L-3	37	TL	22.00/3.0	1750	673	18500	6.5	10
17.5R25	★★	182	L-3	28	TL	14.00/1.5	1348	445	8500	6.5	10	

B02N



PATTERN CHARACTERISTIC

- Increased tread volume for additional wear life and resistance to damage.
- New sidewall design for enhanced reinforcement and protection.
- Robust shoulder design and strong casing reliability.

SIZE	STAR RATING	LOAD INDEX	TRA CODE	TREAD DEPTH (mm)	TYPE	Standard Rim (Rim Width & Flange)	DIAMETER (mm)	SECTION WIDTH (mm)	MAX LOAD (kg)	STANDER PRESSURE (bar)	MAX SPEED (km/h)
23.5R25	★★	201/185	L-3/E-3	34	TL	19.50/2.5	1617	597	14500/9250	6.5/5.25	10/50
23.5R25	★★★	206/189	L-3/E-3	34	TL	19.50/2.5	1617	597	17000/10300	8.0/6.75	10/50
26.5R25	★★	209/193	L-3/E-3	37	TL	22.00/3.0	1750	673	18500/11500	6.5/5.25	10/50
29.5R25	★★	216/200	L-3/E-3	43.5	TL	25.00/3.5	1873	750	22400/14000	6.5/5.25	10/50
29.5R25	★★★	221/204	L-3/E-3	43.5	TL	25.00/3.5	1873	750	25750/16000	8.0	10/50
29.5R29	★★	218/202	L-3/E-3	43.5	TL	25.00/3.5	1975	750	23600/15000	6.5/5.25	10/50
29.5R29	★★★	223/206	L-3/E-3	43.5	TL	25.00/3.5	1975	750	27250/17000	8.0	10/50
16.00R25	★★	177	E-3	34	TL	11.25/2.0	1532	448	7300	7.0	50
26.5R25	★★★	214	L-3	37	TL	22.00/3.0	1750	673	21200	8.0	10

B02S



PATTERN CHARACTERISTIC

- Wide tread pattern design and low profile case.
- Catching mud and powerful traction.
- Driving stable and comfortable.

SIZE	STAR RATING	LOAD INDEX	TRA CODE	TREAD DEPTH (mm)	TYPE	Standard Rim (Rim Width & Flange)	DIAMETER (mm)	SECTION WIDTH (mm)	MAX LOAD (kg)	STANDER PRESSURE (bar)	MAX SPEED (km/h)
600/65R25	★★	187/178	L-3/E-3	35.5	TL	19.50-2.5	1395	610	9750/7500	4.75	10/50
650/65R25	★★	193/180	L-3/E-3	38.5	TL	19.50-2.5	1475	640	11500/8000	4.75	10/50
750/65R25	★★	202/190	L-3/E-3	44.5	TL	24.00-3.0	1590	735	15000/10600	4.75	10/50
16.00R25	★★	177	E-4	44	TL	11.25/2.0	1532	448	7300	7.0	50
875/65R29	★★	214/203	L-3/E-3	52.5	TL	28.00-3.5	1845	900	21200/15500	4.75	10/50
875/65R29	★★★	218/213	L-3/E-3	52.5	TL	28.00-3.5	1850	900	23600/20600	6.5	10/50

BXDN



PATTERN CHARACTERISTIC

- Excellent traction and maneuverability.
- lug design assures smooth mud.
- Stone rejection from the grooves.
- Supper E-3 tread pattern depth

SIZE	STAR RATING	LOAD INDEX	TRA CODE	TREAD DEPTH (mm)	TYPE	Standard Rim (Rim Width & Flange)	DIAMETER (mm)	SECTION WIDTH (mm)	MAX LOAD (kg)	STANDER PRESSURE (bar)	MAX SPEED (km/h)
17.5R25	★★	182/167	L-3/E-3	28	TL	14.00/1.5	1348	445	8500/5450	6.5/5.25	10/50
20.5R25	★★	193/177	L-3/E-3	31	TL	17.00/2.0	1490	521	11500/7300	6.5/5.25	10/50
23.5R25	★★	201/185	L-3/E-3	42.5	TL	19.50/2.5	1617	597	14500/9250	6.5/5.25	10/50
26.5R25	★★	209/193	L-3/E-3	45	TL	22.00/3.0	1770	673	18500/11500	6.5/5.25	10/50
29.5R25	★★	216/200	L-3/E-3	48	TL	25.00/3.5	1873	750	22400/14000	6.5/5.25	10/50

LCHS



PATTERN CHARACTERISTIC

- Exceptionally robust in masacre conditions.
- Excellent compromise of adhesion and traction.
- Very substantial, wide and aggressive tread functions.
- Resistant to shock ruptures, cuts and tread tearing.
- A particularly resilient casing with the addition of several specific steel belts.

SIZE	STAR RATING	LOAD INDEX	TRA CODE	TREAD DEPTH (mm)	TYPE	Standard Rim (Rim Width & Flange)	DIAMETER (mm)	SECTION WIDTH (mm)	MAX LOAD (kg)	STANDER PRESSURE (bar)	MAX SPEED (Km/h)
23.5R25	★★	201/185	L-4/E-4	47	TL	19.50/2.5	1673	597	14500/9250	6.5/5.25	10/50
26.5R25	★★	209/193	L-4/E-4	57	TL	22.00/3.0	1798	673	18500/11500	6.5/5.25	10/50
29.5R29	★★	218/202	L-4/E-4	60	TL	25.00/3.5	2023	750	23600/15000	6.5/5.25	10/50
35/65R33	★★	224/207	L-4/E-4	62.5	TL	28.00/3.5	2040	889	28000/17500	6.5/5.25	10/50

LCHS+



PATTERN CHARACTERISTIC

- Exceptionally robust in masacre conditions.
- Excellent compromise of adhesion and traction.
- Very substantial, wide and aggressive tread functions.
- Resistant to shock ruptures, cuts and tread tearing.
- A particularly resilient casing with the addition of several specific steel belts.

SIZE	STAR RATING	LOAD INDEX	TRA CODE	TREAD DEPTH (mm)	TYPE	Standard Rim (Rim Width & Flange)	DIAMETER (mm)	SECTION WIDTH (mm)	MAX LOAD (kg)	STANDER PRESSURE (bar)	MAX SPEED (Km/h)
20.5R25	★★	193	L-5	72	TL	17.00/2.0	1548	521	11500	6.5	10
23.5R25	★★	201	L-5	78	TL	19.50/2.5	1673	597	14500	6.5	10
26.5R25	★★	209	L-5	87	TL	22.00/3.0	1798	673	18500	6.5	10
29.5R25	★★	216	L-5	95	TL	25.00/3.5	1921	750	22400	6.5	10
29.5R29	★★	218	L-5	95	TL	25.00/3.5	2023	750	23600	6.5	10
35/65R33	★★	224	L-5	97	TL	28.00/3.5	2065	889	28000	6.5	10

MWS



PATTERN CHARACTERISTIC

- Excellent traction.
- Superb side-cut resistance.
- Better riding comfort.
- Long tread life (L-4 tread class).
- Superb side-cut resistance.

SIZE	STAR RATING	LOAD INDEX	TRA CODE	TREAD DEPTH (mm)	TYPE	Standard Rim (Rim Width & Flange)	DIAMETER (mm)	SECTION WIDTH (mm)	MAX LOAD (kg)	STANDER PRESSURE (bar)	MAX SPEED (Km/h)
23.5R25	★★	201	L-4	51	TL	19.50/2.5	1673	597	14500	6.5	10
26.5R25	★★	209	L-4	60	TL	22.00/3.0	1798	673	18500	6.5	10
29.5R25	★★	216	L-4	66.5	TL	25.00/3.5	1921	750	22400	6.5	10
35/65R33	★★	224	L-4	62.5	TL	28.00/3.5	2065	889	28000	6.5	10

MWS+



PATTERN CHARACTERISTIC

- Excellent traction.
- Superb side-cut resistance.
- Better riding comfort.
- Long tread life (L-5 tread class).
- Superb side-cut resistance.

SIZE	STAR RATING	LOAD INDEX	TRA CODE	TREAD DEPTH (mm)	TYPE	Standard Rim (Rim Width & Flange)	DIAMETER (mm)	SECTION WIDTH (mm)	MAX LOAD (kg)	STANDER PRESSURE (bar)	MAX SPEED (Km/h)
17.5R25	★★	182	L-5	68	TT	14.00/1.5	1399	445	8500	6.5	10
17.5R25	★★★	193	L-5	68	TT	14.00/1.5	1399	445	11500	8.0	10
20.5R25	★★	193	L-5	78	TL	17.00/2.0	1548	521	11500	6.5	10
23.5R25	★★	201	L-5	87	TL	19.50/2.5	1673	597	14500	6.5	10
26.5R25	★★	209	L-5	96	TL	22.00/3.0	1798	673	18500	6.5	10
26.5R25	★★★	213	L-5	96	TL	22.00/3.0	1808	673	20600	8.0	10
29.5R25	★★	216	L-5	104	TL	25.00/3.5	1921	750	22400	6.5	10
29.5R29	★★	218	L-5	104	TL	25.00/3.5	2023	750	23600	6.5	10
35/65R33	★★	224	L-5	97	TL	28.00/3.5	2065	889	28000	6.5	10
35/65R33	★★★★	225/229	L-5	97	TL	28.00/3.5	2065	889	29000/32500	8.0	10/40

SMS+

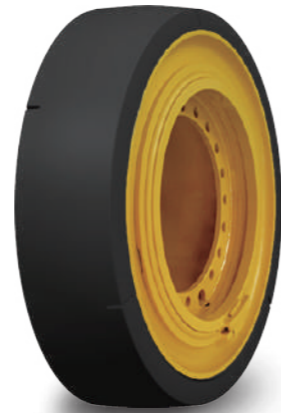


PATTERN CHARACTERISTIC

- Extremely smooth deep tread and robust shoulders.
- Sidewall protection ensure an excellent defence against shock ruptures.
- Excellent tread tearing resistance.
- Supper cut-resistance compound.

SIZE	STAR RATING	LOAD INDEX	TRA CODE	TREAD DEPTH (mm)	TYPE	Standard Rim (Rim Width & Flange)	DIAMETER (mm)	SECTION WIDTH (mm)	MAX LOAD (Kg)	STANDER PRESSURE (bar)	MAX SPEED (Km/h)
12.00R24	★★	175	L-5S	55	TT/TL	8.50	1255	315	6900	8.0	10
17.5R25	★★	182	L-5S	65	TT/TL	14.00/1.5	1399	445	8500	6.5	10
20.5R25	★★	193	L-5S	72	TL	17.00/2.0	1548	521	11500	6.5	10
20.5R25	★★★	200	L-5S	72	TL	17.00/2.0	1548	521	14000	8.0	10
23.5R25	★★	201	L-5S	83	TL	19.50/2.5	1673	597	14500	6.5	10
26.5R25	★★	209	L-5S	90	TL	22.00/3.0	1808	673	18500	6.5	10
29.5R25	★★	216	L-5S	100	TL	25.00/3.5	1921	750	22400	6.5	10
29.5R29	★★	218	L-5S	100	TL	25.00/3.5	2023	750	23600	6.5	10
18.00R25	★★	204	L-5S	80	TL	13.00/2.5	1655	515	16000	8.25	10
35/65R33	★★	224	L-5S	97	TL	28.00/3.5	2065	889	28000	6.5	10

SM6S+



PATTERN CHARACTERISTIC

- Extremely smooth deep tread and robust shoulders.
- Sidewall protection ensure an excellent defence against shock ruptures.
- Excellent tread tearing resistance.
- Supper cut-resistance compound.

SIZE	STAR RATING	LOAD INDEX	TRA CODE	TREAD DEPTH (mm)	TYPE	Standard Rim (Rim Width & Flange)	DIAMETER (mm)	SECTION WIDTH (mm)	MAX LOAD (Kg)	STANDER PRESSURE (bar)	MAX SPEED (Km/h)
12.00R24	★★	175	L-5S	55	TT/TL	8.5	1270	324	6900	8.0	10

BLGN



PATTERN CHARACTERISTIC

- Superior traction.
- Excellent self-cleaning and even wearing.
- Greater cut resistance.
- Non-directional pattern.

SIZE	STAR RATING	LOAD INDEX	TRA CODE	TREAD DEPTH (mm)	TYPE	Standard Rim (Rim Width & Flange)	DIAMETER (mm)	SECTION WIDTH (mm)	MAX LOAD (Kg)	STANDER PRESSURE (bar)	MAX SPEED (Km/h)
16.00R24	★★	181/163	L-2/G-2	27	TL	10.00/1.7	1459	427	8250/4875	8.25/4.25	10/40
13.00R24	★★	146	G-2	26.5	TL	8.00/1.4	1280	335	3000	3.75	40

G1



PATTERN CHARACTERISTIC

- Wear resistance tread design, the pattern block of large, high strength formula of engineering tyre rubber, suitable for loaders, bulldozers, earth moving machinery operation, fully improve the tyre cutting resistance and abrasion resistance.

SIZE	STAR RATING	TRA CODE	TREAD DEPTH (mm)	TYPE	Standard Rim (Rim Width & Flange)	DIAMETER (mm)	SECTION WIDTH (mm)	MAX LOAD (Kg)	STANDER PRESSURE (bar)	MAX SPEED (Km/h)
17.5-25	12	L-3/G-1	26	TT	14.00/1.5	1350	445	6150/3650	3.5/2.25	10/50
20.5-25	16	E-3/G-1	28	TT	17.00/2.0	1490	520	8250/5450	3.5/2.75	10/50
23.5-25	16	L-3/G-1	33.5	TT	19.50/2.5	1615	595	9500/6150	3/2.25	10/50
26.5-25	28	E-3/L-3	39	TT	22.00/3.0	1750	675	15500/10000	4.75/3.5	10/50

G2



PATTERN CHARACTERISTIC

- The pattern has good traction, stability, anti-slip and excellent self-cleaning properties that fit in the hard road and hard mining environment work, but also suitable for the soil and sand in the soft ground and road conditions jobs, mainly used for earthmoving machines, loaders and other construction vehicles.

SIZE	STAR RATING	TRA CODE	TREAD DEPTH (mm)	TYPE	Standard Rim (Rim Width & Flange)	DIAMETER (mm)	SECTION WIDTH (mm)	MAX LOAD (Kg)	STANDER PRESSURE (bar)	MAX SPEED (Km/h)
17.5-25	16	L-3/G-2	26	TT	14.00/1.5	1350	445	7300/4250	4.75/3	10/50
20.5-25	20	L-3/G-2	28	TT	17.00/2.0	1490	520	9500/6000	4.5/3.25	10/50
23.5-25	20	L-3/G-2	33.5	TT	19.50/2.5	1615	595	10900/7300	3.75/3	10/50
26.5-25	28	E-3/L-3	39	TT	22.00/3.0	1750	675	15500/10000	4.75/3.5	10/50

L5



PATTERN CHARACTERISTIC

- Ultra-deep block pattern and high-strength casing design, with ripe-resistant, anti-puncture and cut resistance, suitable for use on loaders and scrapers in the mining, forest and underground mining operations in harsh environment conditions.

SIZE	STAR RATING	TRA CODE	TREAD DEPTH (mm)	TYPE	Standard Rim (Rim Width & Flange)	DIAMETER (mm)	SECTION WIDTH (mm)	MAX LOAD (Kg)	STANDER PRESSURE (bar)	MAX SPEED (Km/h)
23.5-25	24	L-5	78.5	TT	19.50/2.5	1615	595	12500	4.75	10

ARTICULAR DUMPER TRUCKS



BDTS **BDTS2**



BDTS **BDTS2**

Pattern	TRA CODE	ARTICULAR DUMPER TRUCKS
BDTS	E-4	✓
BDTS2	E-4	✓

Available Size

Size	23.5R25	26.5R25	29.5R25	29.5R29	16.00R25	875/65R29
BDTS	✓	✓	✓	✓		✓
BDTS2					✓	

BDTS/BDTS2



Articular Dumper Trucks



PATTERN CHARACTERISTIC

- Superior riding comfort.
- Optimum traction and self-cleaning.
- Exceptional stability.
- Three different compounds C1,R1,CS, for diverse working condition.

SIZE	STAR RATING	LOAD INDEX	TRA CODE	TREAD DEPTH (mm)	TYPE	Standard Rim (Rim Width & Flange)	DIAMETER (mm)	SECTION WIDTH (mm)	MAX LOAD (kg)	STANDER PRESSURE (bar)	MAX SPEED (km/h)
23.5R25	★★	185	E-4	48	TL	19.50/2.5	1673	597	9250	5.25	50
26.5R25	★★	193	E-4	52	TL	22.00/3.0	1798	673	11500	5.25	50
29.5R25	★★	200	E-4	57	TL	25.00/3.5	1921	750	14000	5.25	50
29.5R29	★★	202	E-4	57	TL	25.00/3.5	2023	750	15000	5.25	50
* 16.00R25	★★	177	E-4	46	TL	11.25/2.0	1532	448	7300	7	50
NEW ** 875/65R29	★★	214/203	L-3/E-3	52.5	TL	28.00/3.5	1840	900	21200/15500	4.75	10/50
NEW ** 875/65R29	★★★	218/213	L-3/E-3	52.5	TL	28.00/3.5	1840	900	23600/20600	6.50	10/50
** 600/65R29	★★	187/178	L-3/E-3	35.5	TL	19.50/2.5	1395	610	9750/7500	4.75	10/50
** 650/65R29	★★	193/180	L-3/E-3	35.5	TL	19.50/2.5	1475	640	11500/8000	4.75	10/50
** 750/65R29	★★	202/190	L-3/E-3	44.5	TL	24.00/3.0	1590	73.5	15000/10600	4.75	10/50

**Only for BDTS
* Only for BDTS2

RIGID DUMPER TRUCKS



B03S BDRS HLG01



Pattern	TRA CODE	RIGID DUMPER TRUCKS
B03S/ B03S2	E-4	✓
B06S	E-4	✓
B04S	E-4	✓
B04S2	E-4	✓
BDRS	E-4	✓
HLG01	E-4	✓
HLG03	E-4	✓
HLG06	E-4	✓
HLG05	E-4	✓
HLG04	E-4	✓

Available Size

Size	B03S	B03S2	B04S	B04S2	B06S	BDRS	HLG01	HLG04	HLG03	HLG06	HLG05
14.00R24	✓										
14.00R25	✓	✓									
18.00R25	✓				✓						
18.00R33			✓	✓	✓	✓					
21.00R33					✓						
21.00R35			✓	✓		✓					
24.00R35			✓	✓		✓					
27.00R49			✓				✓		✓		
30.00R51										✓	✓
33.00R51							✓			✓	
36.00R51							✓				
40.00R57									✓		
46/90R57								✓			

B03S/B03S2



PATTERN CHARACTERISTIC

- Extra-deep grooves with strong traction.
- Travel over soft and muddy terrain.
- Cool running innovative tread rubber compound.
- Cut and speed resistance compound.

SIZE	STAR RATING	LOAD INDEX	TRA CODE	TREAD DEPTH (mm)	TYPE	Standard Rim (Rim Width & Flange)	DIAMETER (mm)	SECTION WIDTH (mm)	MAX LOAD (kg)	STANDER PRESSURE (bar)	MAX SPEED (km/h)
14.00R24	★★★	168	E-4	38	TT	10.0	1418	383	5600	8	50
14.00R25	★★★	168	E-4	38	TL	10.00/1.5	1418	383	5600	8	50
18.00R25	★★	185	E-4	47	TL	13.00/2.5	1673	498	9250	7	50
* 14.00R25	★★★	168	E-4	34	TL	10.00/1.5	1418	383	5600	8	50

*14.00R25 is only for B03S2

B06S



PATTERN CHARACTERISTIC

- Extra-deep grooves with strong traction.
- Travel over soft and muddy terrain.
- Cool running innovative tread rubber compound.
- Cut and speed resistance compound.

SIZE	STAR RATING	LOAD INDEX	TRA CODE	TREAD DEPTH (mm)	TYPE	Standard Rim (Rim Width & Flange)	DIAMETER (mm)	SECTION WIDTH (mm)	MAX LOAD (kg)	STANDER PRESSURE (bar)	MAX SPEED (km/h)
18.00R25	★★	185	E-4	47	TL	13.00/2.5	1673	498	9250	7	50
18.00R33	★★	191	E-4	49	TL	13.00/2.5	1877	498	10900	7	50
21.00R33	★★	200	E-4	54	TL	15.00/3.0	1960	570	14000	7	50

BDRS



PATTERN CHARACTERISTIC

- Cool running innovative tread rubber compound.
- Longer lasting casing and bead.
- An exclusive manufacturing process allowing for the optimal curing of the bead area.
- Providing reduced rubber tension for better resistance to cuts.

SIZE	STAR RATING	LOAD INDEX	TRA CODE	TREAD DEPTH (mm)	TYPE	Standard Rim (Rim Width & Flange)	DIAMETER (mm)	SECTION WIDTH (mm)	MAX LOAD (kg)	STANDER PRESSURE (bar)	MAX SPEED (km/h)
18.00R33	★★	191	E-4	54	TL	13.00/2.5	1877	498	10900	7	50
21.00R35	★★	201	E-4	54	TL	15.00/3.0	2052	572	14500	7	50
24.00R35	★★	209	E-4	58	TL	17.00/3.5	2160	653	18500	7	50

B04S



PATTERN CHARACTERISTIC

- Reduced wheel spin in bad conditions.
- Good traction.
- Special abrasion resistance.

SIZE	STAR RATING	LOAD INDEX	TRA CODE	TREAD DEPTH (mm)	TYPE	Standard Rim (Rim Width & Flange)	DIAMETER (mm)	SECTION WIDTH (mm)	MAX LOAD (kg)	STANDER PRESSURE (bar)	MAX SPEED (km/h)
18.00R33	★★	191	E-4	54	TL	13.00/2.5	1877	498	10900	7	50
21.00R35	★★	201	E-4	61	TL	15.00/3.0	2068	572	14500	7	50
24.00R35	★★	209	E-4	68	TL	17.00/3.5	2175	653	18500	7	50
NEW 27.00R49	★★	223	E-4	76	TL	19.50/4.0	2688	734	27250	7	50
NEW 33.00R51	★★	235	E-4	94	TL	24.00/5.0	3061	912	38750	7	50

B0452



Rigid Dumper Trucks



PATTERN CHARACTERISTIC

- Superior traction on muddy terrain.
- Recommended for rigid dump trucks.
- Full depth tread blocks.
- Providing reduced rubber tension for better resistance to cuts.

SIZE	STAR RATING	LOAD INDEX	TRA CODE	TREAD DEPTH (mm)	TYPE	Standard Rim (Rim Width & Flange)	DIAMETER (mm)	SECTION WIDTH (mm)	MAX LOAD (Kg)	STANDER PRESSURE (bar)	MAX SPEED (Km/h)
18.00R33	★★	191	E-4	49	TL	13.00/2.5	1877	498	10900	7	50
21.00R35	★★	201	E-4	52	TL	15.00/3.0	2052	572	14500	7	50
24.00R35	★★	209	E-4	58	TL	17.00/3.5	2175	653	18500	7	50

HLG01



Rigid Dumper Trucks



PATTERN CHARACTERISTIC

- Rock-deep tread with tough lug and sidewall protectors.
- Special designed for large dump trucks engaged in earthmoving.
- High resistance to cutting and chipping for tread life.

SIZE	STAR RATING	LOAD INDEX	TRA CODE	TREAD DEPTH (mm)	TYPE	Standard Rim (Rim Width & Flange)	DIAMETER (mm)	SECTION WIDTH (mm)	MAX LOAD (Kg)	STANDER PRESSURE (bar)	MAX SPEED (Km/h)
27.00R49	★★	223	E-4	58	TL	19.50/4.0	2702	737	27250	7.0	50
33.00R51	★★	235	E-4	80	TL	24.00/5.0	3061	894	38750	7.0	50
36.00R51	★★	241	E-4	88	TL	26.00/5.0	3233	988	46250	7.0	50

HLG04



Rigid Dumper Trucks



PATTERN CHARACTERISTIC

- Optimal Tread Pattern.
- Tougher in the Long Run.
- Stable and Long Lasting.
- Heat Dispersion.
- Maximize Life with Minimal Heat Build up.

SIZE	STAR RATING	LOAD INDEX	TRA CODE	TREAD DEPTH (mm)	TYPE	Standard Rim (Rim Width & Flange)	DIAMETER (mm)	SECTION WIDTH (mm)	MAX LOAD (Kg)	STANDER PRESSURE (bar)	MAX SPEED (Km/h)
NEW 46/90R57	★★	252	E-4	100	TL	29.00/6.0	3564	1180	63000	7.0	50

HLG03



Rigid Dumper Trucks



PATTERN CHARACTERISTIC

- Extra-long tread life.
- Superior cut resistance.
- Low heat generation.
- Excellent casing durability.

SIZE	STAR RATING	LOAD INDEX	TRA CODE	TREAD DEPTH (mm)	TYPE	Standard Rim (Rim Width & Flange)	DIAMETER (mm)	SECTION WIDTH (mm)	MAX LOAD (Kg)	STANDER PRESSURE (bar)	MAX SPEED (Km/h)
27.00R49	★★	223	E-4	61	TL	19.50/4.0	2702	737	27250	7.0	50
40.00R57	★★	250	E-4	80	TL	29.00/6.0	3520	1095	60000	7.0	50

HLG05



Rigid Dumper Trucks



PATTERN CHARACTERISTIC

- Optimal Tread Pattern.
- Tougher in the Long Run.
- Stable and Long Lasting.
- Heat Dispersion.
- Maximize Life with Minimal Heat Build up.

SIZE	STAR RATING	LOAD INDEX	TRA CODE	TREAD DEPTH (mm)	TYPE	Standard Rim (Rim Width & Flange)	DIAMETER (mm)	SECTION WIDTH (mm)	MAX LOAD (Kg)	STANDER PRESSURE (bar)	MAX SPEED (Km/h)
NEW 30.00R51	★★	230	E-4	64	TL	22.00/4.5	2904	823	33500	7.0	50

HLG06



Rigid Dumper Trucks



PATTERN CHARACTERISTIC

- Optimal Tread Pattern.
- Tougher in the Long Run.
- Stable and Long Lasting.
- Heat Dispersion.
- Maximize Life with Minimal Heat Build up.

SIZE	STAR RATING	LOAD INDEX	TRA CODE	TREAD DEPTH (mm)	TYPE	Standard Rim (Rim Width & Flange)	DIAMETER (mm)	SECTION WIDTH (mm)	MAX LOAD (Kg)	STANDER PRESSURE (bar)	MAX SPEED (Km/h)
30.00R51	★★	230	E-4	64	TL	22.00/4.5	2904	823	33500	7.0	50
33.00R51	★★	235	E-4	70	TL	24.00/5.0	3061	894	38750	7.0	50
36.00R51	★★	241	E-4	78	TL	26.00/5.0	3233	988	46250	7.0	50

PORT TIRES



B07S **M08S** **BSCS**

Pattern	TRA CODE	PORT TIRES
B07S	IND-4	✓
M08S	IND-4	✓
BSCS	IND-4	✓

Available Size

Size	B07S	M08S	BSCS
12.00R24		✓	
14.00R24	✓		
16.00R25		✓	✓
18.00R25		✓	
18.00R33		✓	

OFF-THE-ROAD TIRES

B07S



PATTERN CHARACTERISTIC

- The rugged radial tyre designed for forklift trucks, terminal tractors and other industrial equipments used in heavy-duty applications.

SIZE	STAR RATING	LOAD INDEX	TRA CODE	TREAD DEPTH (mm)	TYPE	Standard Rim (Rim Width & Flange)	DIAMETER (mm)	SECTION WIDTH (mm)	MAX LOAD (Kg)	STANDER PRESSURE (bar)	MAX SPEED (Km/h)
14.00R24	★★★	196	IND-4	64.5	TL	10.00W	1395	390	12500	10	25
18.00R25	★★★	214	IND-4	63	TL	13.00/2.5	1680	510	21200	10	25

M08S



PATTERN CHARACTERISTIC

- Massive tread and wear-resistant, low abrasion rubber.
- Extensive speed capability and Reinforced crown architecture.
- High resistance to impact and puncture.
- Bead protected from aggression and Extensive stability.

SIZE	STAR RATING	LOAD INDEX	TRA CODE	TREAD DEPTH (mm)	TYPE	Standard Rim (Rim Width & Flange)	DIAMETER (mm)	SECTION WIDTH (mm)	MAX LOAD (Kg)	STANDER PRESSURE (bar)	MAX SPEED (Km/h)
12.00R24	★★	178	IND-4	41.5	TL	8.5	1245	340	7500	10	25
16.00R25	★★	200	IND-4	72.5	TL	11.25/2.0	1530	430	14000	10	25
18.00R25	★★★	214	IND-4	63	TL	13.00/2.5	1680	510	21200	10	25
18.00R33	★★★	219	IND-4	73	TL	13.00/2.5	1860	510	24300	10	25

BSCS



PATTERN CHARACTERISTIC

- Longer tire life and stronger durability.
- Double sidewall carcass and protection cords.
- Increase 15% ground contact Area and 35% bead wire intensity.

SIZE	STAR RATING	LOAD INDEX	TRA CODE	TREAD DEPTH (mm)	TYPE	Standard Rim (Rim Width & Flange)	DIAMETER (mm)	SECTION WIDTH (mm)	MAX LOAD (Kg)	STANDER PRESSURE (bar)	MAX SPEED (Km/h)
16.00R25	★★★	200	IND-4	50	TL	11.25/2.0	1510	438	14000	10	25

CRANES, COMPACTORS



B05N BGZN C7



Pattern	TRA CODE	CRANES	COMPACTORS
B05N	E-2	✓	
BGZN	E-2	✓	
C7	C-7		✓

Available Size

Size	14.00R24 (385/95R24)	14.00R25 (385/95R25)	16.00R25 (445/95R25)	17.5R25 (445/80R25)	20.5R25 (525/80R25)	18.00R25 (505/95R25)	23.1-26
B05N	✓	✓	✓	✓	✓	✓	
BGZN	✓	✓	✓				
C-7							✓

B05N



PATTERN CHARACTERISTIC

- Heat resistance compound and high speed durability.
- Providing reduced rubber tension for better resistance to cuts.
- Up to 10% additional tread volume.

SIZE	STAR RATING	LOAD INDEX	TRA CODE	TREAD DEPTH (mm)	TYPE	Standard Rim (Rim Width & Flange)	DIAMETER (mm)	SECTION WIDTH (mm)	MAX LOAD (kg)	STANDER PRESSURE (bar)	MAX SPEED (Km/h)
14.00R24 (385/95R24)	★★★	170	E-2	23	TT	10.00W	1356	382	6000	10	70
14.00R25 (385/95R25)	★★★	170	E-2	23	TL	10.00/1.5	1356	382	6000	10	70
16.00R25 (445/95R25)	★★★	174/177	E-2	28	TL	11.25/2.0	1493	432	6700/7300	10	80/70
17.5R25 (445/80R25)	★★★	170	E-2	28	TL	14.00/1.5	1348	445	6000	8	70
20.5R25 (525/80R25)	★★★	179	E-2	31	TL	17.00/2.0	1490	521	7750	8	70
18.00R25 (505/95R25)	★★★	186	E-2	28	TL	13.00/2.5	1615	498	9500	9.0	70

BGZN



PATTERN CHARACTERISTIC

- Heat resistance compound and high speed durability.
- Providing reduced rubber tension for better resistance to cuts.
- Up to 10% additional tread volume.

SIZE	STAR RATING	LOAD INDEX	TRA CODE	TREAD DEPTH (mm)	TYPE	Standard Rim (Rim Width & Flange)	DIAMETER (mm)	SECTION WIDTH (mm)	MAX LOAD (kg)	STANDER PRESSURE (bar)	MAX SPEED (Km/h)
14.00R24 (385/95R24)	★★★	170	E-2	23	TT	10.00W	1368	382	6000	10	70
14.00R25 (385/95R25)	★★★	170	E-2	23	TL	10.00/1.5	1368	382	6000	10	70
16.00R25 (445/95R25)	★★★	174/177	E-2	28	TL	11.25/2.0	1493	432	6700/7300	10	80/70

C-7



PATTERN CHARACTERISTIC

- Special pattern for road roller.

SIZE	STAR RATING	TRA CODE	TREAD DEPTH (mm)	TYPE	Standard Rim (Rim Width & Flange)	DIAMETER (mm)	SECTION WIDTH (mm)	MAX LOAD (kg)	STANDER PRESSURE (bar)	MAX SPEED (Km/h)
23.1-26	12	C-7	17	TT	DW20	1500	595	5150	2	10

MINING TRUCKS



LGDN LOFN LGXN2



LGDN 969 AN609



G-3 LOFN (13.00R25) LOFN (14.00R25 14.00R24) AN6092 13.00R25/14.00R25



LGXN2 LOFN2 LOFN16 LOFN26

Pattern	TRA CODE	MINING TRUCKS
LGDN	E-3	✓
LOFN	E-3	✓
LOFN26	E-4	✓
G-3	E-3/(G-3)	✓
AN609	E-3	✓
969		✓
AN6092	E-4	✓
LGXN2	E-4	✓
LOFN2	E-4	✓
LOFN16	E-3	✓

Available Size

Size	LGDN	LOFN	LOFN26	G-3	AN609	969	AN6092	LGXN2	LOFN2	LOFN16
12.00R24	✓									
13.00R25		✓			✓		✓			
14.00R20					✓	✓				
14.00R24		✓								
14.00R25		✓	✓				✓	✓	✓	✓
13.00-25NHS				✓						
14.00-24NHS				✓						
14.00-25NHS				✓						

LGDN



PATTERN CHARACTERISTIC

- Extra deep tread and big pattern blocks.
- High speed durability and heat resistance.
- Mining truck tires on rough condition.

SIZE	STAR RATING	LOAD INDEX	TRA CODE	TREAD DEPTH (mm)	TYPE	Standard Rim (Rim Width & Flange)	DIAMETER (mm)	SECTION WIDTH (mm)	MAX LOAD (Kg)	STANDER PRESSURE (bar)	MAX SPEED (Km/h)
12.00R24	20PR	156	E-3	30	TT	8.5	1225	315	4000	8.5	50
12.00R24	24PR	161	E-3	30	TT	8.5	1225	315	4625	8.5	50

LOFN



13.00R25 14.00R24
14.00R25

PATTERN CHARACTERISTIC

- Extra deep tread and big pattern blocks.
- High speed durability and heat resistance.
- Mining truck tires on rough condition.
- Small dumping truck application.

SIZE	STAR RATING	LOAD INDEX	TRA CODE	TREAD DEPTH (mm)	TYPE	Standard Rim (Rim Width & Flange)	DIAMETER (mm)	SECTION WIDTH (mm)	MAX LOAD (Kg)	STANDER PRESSURE (bar)	MAX SPEED (Km/h)
13.00R25	★★★	163	E-3	28	TT/TL	8.5	1295	338	7000	12.5	50
14.00R24	★★★	169	E-3	28	TT	10.0/1.7	1355	370	10000	12.5	50
14.00R25	★★★	169	E-3	28	TT/TL	10.00/2.0 10.00/1.5	1355	370	10000	12.5	50

G-3



PATTERN CHARACTERISTIC

- High strength tyre carcass.
- Wear resistance tread design, low heat and good heat dissipation.
- With strong resistance to cutting and abrasion resistance, suitable for use in heavy-duty engineering vehicle on the mine transportation.

SIZE	STAR RATING	TRA CODE	TREAD DEPTH (mm)	TYPE	Standard Rim (Rim Width & Flange)	DIAMETER (mm)	SECTION WIDTH (mm)	MAX LOAD (Kg)	STANDER PRESSURE (bar)	MAX SPEED (Km/h)
13.00-25NHS	28	E-3/(G-3)	29.5	TT	10.00/1.5	1300	350	9250/4875	10.5/7	10/50
14.00-24NHS	28	E-3/(G-3)	31	TT	10.0	1370	375	10000/5600	9.25/6.5	10/50
14.00-25NHS	28	E-3/(G-3)	31	TT	10.00/1.5	1370	375	10000/5600	9.25/6.5	10/50

AN609



PATTERN CHARACTERISTIC

- Extra deep tread and big pattern blocks.
- High speed durability and heat resistance.
- Mining truck tires on rough condition.

SIZE	STAR RATING	LOAD INDEX	TRA CODE	TREAD DEPTH (mm)	TYPE	Standard Rim (Rim Width & Flange)	DIAMETER (mm)	SECTION WIDTH (mm)	MAX LOAD (Kg)	STANDER PRESSURE (bar)	MAX SPEED (Km/h)
13.00R25	★★★	167	E-3	26	TT/TL	8.5	1300	350	7000	12.5	50
14.00R25	★★★	169	E-3	28	TT	10.00/2.0	1365	367	10000	12.5	50

AN6092 Mining Trucks



PATTERN CHARACTERISTIC

- Extra deep tread and big pattern blocks.
- High speed durability and heat resistance.
- Mining truck tires on rough condition.

NEW	SIZE	STAR RATING	LOAD INDEX	TRA CODE	TREAD DEPTH (mm)	TYPE	Standard Rim (Rim Width & Flange)	DIAMETER (mm)	SECTION WIDTH (mm)	MAX LOAD (Kg)	STANDER PRESSURE (bar)	MAX SPEED (Km/h)
	13.00R25	★★★	163	E-4	31	TT	8.5	1300	338	7000	12.5	50
	14.00R25	★★★/★★★★	169	E-4	40	TT	10.00/2.0	1386	367	10000	12.5	50

LGXN2 Mining Trucks



PATTERN CHARACTERISTIC

- Extra deep tread and big pattern blocks.
- High speed durability and heat resistance.
- Mining truck tires on rough condition.

NEW	SIZE	STAR RATING	LOAD INDEX	TRA CODE	TREAD DEPTH (mm)	TYPE	Standard Rim (Rim Width & Flange)	DIAMETER (mm)	SECTION WIDTH (mm)	MAX LOAD (Kg)	STANDER PRESSURE (bar)	MAX SPEED (Km/h)
	14.00R25	★★★/★★★★	169	E-4	34	TT	10.00/2.0	1364	370	10000	12.5	50

LOFN2 Mining Trucks



PATTERN CHARACTERISTIC

- Extra deep tread and big pattern blocks.
- High speed durability and heat resistance.
- Mining truck tires on rough condition.
- Small dumping truck application.

NEW	SIZE	STAR RATING	LOAD INDEX	TRA CODE	TREAD DEPTH (mm)	TYPE	Standard Rim (Rim Width & Flange)	DIAMETER (mm)	SECTION WIDTH (mm)	MAX LOAD (Kg)	STANDER PRESSURE (bar)	MAX SPEED (Km/h)
	14.00R25	★★★/★★★★	169	E-4	34	TT	10.00/2.0	1364	370	10000	12.5	50

LOFN16 Mining Trucks



PATTERN CHARACTERISTIC

- Extra deep tread and big pattern blocks.
- High speed durability and heat resistance.
- Mining truck tires on rough condition.
- Small dumping truck application.

NEW	SIZE	STAR RATING	LOAD INDEX	TRA CODE	TREAD DEPTH (mm)	TYPE	Standard Rim (Rim Width & Flange)	DIAMETER (mm)	SECTION WIDTH (mm)	MAX LOAD (Kg)	STANDER PRESSURE (bar)	MAX SPEED (Km/h)
	14.00R25	★★★	169	E-3	28	TT	10.00/2.0	1362	367	10000	12.5	50

LOFN26 Mining Trucks



PATTERN CHARACTERISTIC

- Extra deep tread and big pattern blocks.
- High speed durability and heat resistance.
- Mining truck tires on rough condition.
- Small dumping truck application.

NEW	SIZE	STAR RATING	LOAD INDEX	TRA CODE	TREAD DEPTH (mm)	TYPE	Standard Rim (Rim Width & Flange)	DIAMETER (mm)	SECTION WIDTH (mm)	MAX LOAD (Kg)	STANDER PRESSURE (bar)	MAX SPEED (Km/h)
	14.00R25	★★★/★★★★	169	E-4	40	TT	10.00/2.0	1386	367	10000	12.5	50

SNOW TIRES, BACK-HAUL LOADERS



BWYN



R-4



BWYN/BWYNL SNOWMASTER



R-4

Pattern	TRA CODE	SNOW TIRES	BACK-HAUL LOADERS
BWYN/ BWYNL	E-2 L-2/E-2	✓	
SNOW MASTER	L-2/E-2	✓	
R-4	R-4		✓

Available Size

Size	15.5R25	16.0R25	17.5R25	20.5R25	23.5R25	26.5R25	29.5R25	18.4-26	12.5/80 -18	14.5/75-20	14.00R24	14.00R25
BWYN/BWYNL	✓	✓	✓	✓	✓	✓	✓				✓	✓
SNOWMASTER			✓	✓	✓							
R-4								✓	✓	✓		

BWYN/BWYNL



PATTERN CHARACTERISTIC

- Snow compound for SNOW&ICE road.
- Excellent traction in snow condition.
- Light construction for loader only.
- High speed durability.



SIZE	STAR RATING	LOAD INDEX	TRA CODE	TREAD DEPTH (mm)	TYPE	Standard Rim (Rim Width & Flange)	DIAMETER (mm)	SECTION WIDTH (mm)	MAX LOAD (Kg)	STANDER PRESSURE (bar)	MAX SPEED (Km/h)
15.5R25	★★	176/160	L-2/E-2	25	TL	12.00/1.3	1277	394	7100/4500	6.5/5.25	10/50
16.0R25	★★★	174/177	E-2	28	TL	11.25/2.0	1493	432	6700/7300	7.0	80/70
17.5R25	★★	182/167	L-2/E-2	28	TL	14.00/1.5	1348	445	8500/5450	6.5/5.25	10/50
20.5R25	★★	193/177	L-2/E-2	31	TL	17.00/2.0	1490	521	11500/7300	6.5/5.25	10/50
23.5R25	★★	201/185	L-2/E-2	34	TL	19.50/2.5	1617	597	14500/9250	6.5/5.25	10/50
26.5R25	★★	209/193	L-2/E-2	37	TL	22.00/3.0	1750	673	18500/11500	6.5/5.25	10/50
29.5R25	★★	216/200	L-2/E-2	43.5	TL	25.00/3.5	1873	750	22400/14000	6.5/5.25	10/50
14.00R24	★	175/153	G-2/L-2	23	TL	10.00W	1352	373	6900/3650	10	10/40
14.00R25	★★★	170	E-2	23	TL	10.00/1.5	1352	373	6000	10	70
17.5R25	★★	182/167	L-2/E-2	28	TL	14.00/1.5	1348	445	8500/5450	6.5/5.25	10/50
23.5R25	★★	201/185	L-2/E-2	34	TL	19.50/2.5	1617	597	14500/9250	6.5/5.25	10/50

SNOWMASTER



PATTERN CHARACTERISTIC

- Multiple sipes and offset shoulder.
- Excellent traction on mud, snow and ice.
- Open shoulder for self-clean in mud or snow.



SIZE	STAR RATING	LOAD INDEX	TRA CODE	TREAD DEPTH (mm)	TYPE	Standard Rim (Rim Width & Flange)	DIAMETER (mm)	SECTION WIDTH (mm)	MAX LOAD (Kg)	STANDER PRESSURE (bar)	MAX SPEED (Km/h)
17.5R25	★★	182/167	L-2/E-2	29	TL	14.00/1.5	1348	445	8500/5450	6.5/5.25	10/50
20.5R25	★★	193/177	L-2/E-2	32	TL	17.00/2.0	1490	521	11500/7300	6.5/5.25	10/50
23.5R25	★★	201/185	L-2/E-2	35	TL	19.50/2.5	1617	597	14500/9250	6.5/5.25	10/50

R-4



PATTERN CHARACTERISTIC

- Traction tread design, block strong, with good grip performance, self-cleaning and anti-puncture strong performance characteristics.
- Suitable for loaders, bulldozers and scrapers conduct operations.



SIZE	STAR RATING	TRA CODE	TREAD DEPTH (mm)	TYPE	Standard Rim (Rim Width & Flange)	DIAMETER (mm)	SECTION WIDTH (mm)	MAX LOAD (Kg)	STANDER PRESSURE (bar)	MAX SPEED (Km/h)
18.4-26	12	R-4	28	TL	DW16	1450	467	2985	2.3	10
12.5/80 -18	14	R-4	25.5	TL	9	985	308	2910	4.3	10
14.5/75-20	14	R-4	26.5	TL	11	1060	372	3460	3.7	10

TON MILE PER HOUR(TMPH)

TKPH/TMPH DEFINITIONS

The Ton kilometre per hour fraction is of great assistance in determining the suitability of a tyre for an operation.

The following factor must be borne in mind with regards the TKPH factor when selecting a tyre Maximum operating TKPH should not exceed the tyre TKPH rating.The average operating TKPH to be calculated after several checks,and should not exceed the tyre TKPH rating.

The TKPH rating data are applicable in the following situations:

To all standard,heat or cut-resistant tyres.

Ambient temperature less than 38 C

Maximum trip distance less than 5 km.

Maximum speed of 50 km/h.

TKPH ADJUSTMENTS

The TKPH factor is influenced by heat.When the heat in the tyre increases due to abnormal conditions such as high ambient temperature,speed and overloading the TKPH should be reduced.Similarly adjustments to the TKPH can be made if the ambient temperature or the speeds are low.

TKPH CONVERSION FACTORS

For temperatures in excess of 38 C -The TKPH should be reduced by approximately 2% for each degree rise above 38 C

For temperatures lower than 38 C -The TKPH should be increase by approximately 1% for each degree below 38 C

Calculating TKPH(to determine actual work rate of an operation)

1.Obtain average of empty and loaded mass per tyre tons for each axle.(If no scales available,use specification sheet masses as best possible estimate).

Mean Tyre Load in Ton=(Empty Mass in kg+loaded Mass in kg)/(2*1000)

2.Obtain overall length of round trip per haul from an engineer.

3.Obtain number of loads hauled per shift from contractor's load count.

4.Obtain total shift hours from contractor.

5.Calculate overall average speed based on Items2,3and4.

Work Day Average Speed=(Overall round trip length*Number Loads per Shift)/Shift Hours.

6.Calculate TKPH based on the HEAVIEST loaded tyre in Item i and average speed from Item5.

TKPH=Mean Tyre Load*Work Day Average Speed.

7.If the calculate TKPH requirement is higher than the TKPH rating of the tyre being used,reduce speed and/or load or use a tyre with higher TKPH rating.

TMPH AND TKPH EXCHANGE

TMPH=TKPH*1.459

TKPH=TMPH*1.459

GUIDELINE ON HOW TO USE TYRES

1.Tyre and Rim

- (1) Check carefully before tyre mounting to see if the rim sizes are identical to those marked on sidewalls.
- (2) The tyre should be fitted as much as possible to standard rims or allowable rim range.
- (3) The tyre should not be fitted to deformed rims or non-conformity rims.

warning:

Deformed rims or non-conformity rims will result in premature tyre toe failure or blow out to hurt People.

2.Inflated Pressure

- (1) Rules should be followed to inflate the tyre.
- (2) It is not appropriate to inflate the tyre over pressure and then release the air to standard pressure.
- (3) Check the tyre pressure regularly and replenish when the air pressure is not found sufficient.

Warning:

Tyre under-pressure will cause decreased loading capacity, easy cord breaking and dangerous blow out, Tyre overpressure will cause cord strength loss and dangerous blow out.

3.Load

- (1) Select the tyre of corresponding ply rating and load based on the vehicle's standard loading capacity.
- (2) The tyre of low ply rating can not bear high load.The tyre load Mn not be increased by the increase of inflated pressure.
- (3) The load should be distributed evenly on the vehicle.

Warning:

Overload will cause a serious injury to the tyre or the People. The vehicle with the load unevenly distributed will cause some of tyres serious overload,which is one of the factors causing accidents.

4.Speed

The tyre should match the vehicle in operating speed and operate in the range of specified speed for vehicle.

Warning:

Overspeed will cause quicker tread wear,rapid heat build up,tyre strength deterioration,separations and even tyre blow out.

5.Tyre Mounting

- (1) Tyres of same specifications,ply ratings and tread patterns must be mounted on the same axle. The original tyre differs from the replaced tyre in height not more than3%.
- (2) Dual tyre rim ventilating holes should be in alignment with each other.Tyre valves should be positioned at 180°to each other.Dual spacing should be more than 20mm under static load.
- (3) Tyre toe-in should be adjusted to a standard value.
- (4) When the old tube is used,its outer circumference should not be over 92% of the inner circumference of the tyre. It is recommended that the old tube with more than 2 repair patches should not remain in use.
- (5) The rim should be tightly and evenly bolted into position.
- (6) As to tyres of directional tread patterns,the direction marked on sidewalls should be identical to the direction of vehicle travel.

Warning

Tyres of different specifications,ply ratings and tread patterns mounted on the same axle will deteriorate comprehensive tyre performances,Smaller dual spacing will cause easy heat build up due to the friction between two tyres and cause premature tyre failure.The tyre toe-in poorly adjusted will cause vehicle's poor directivity,tyre side slip.severe tread wear and increased fuel cost.Too big circumference of the old tube will cause the tube folded inside the tyre and tyre blow out.

6.Pre-ride of tyres

When new tyres have been mounted,the pre-ride should be taken below 50km/h of 200km for normal tyres.Through the pre-ride new tyres will adapt to deformation,remove the stress caused during manufacturing,decrease heat build up and extend tyre performance life.

7.Others

- (1) Quick start up, urgent braking,sharp turning, striking by sharp obstacels,contacts with corrosives and oil contaminants,operation in high temperature,etc.will cause premature tyre failures.
- (2) Tyres should be well maintained and regularly shifted. The sharp obstacles punctured into tyres or the stones clogged in tread channels sbecid be removed immediately.
- (3) When the tyre tread has worn out to the extent specified,stop using it.
- (4) If there is any probelem regarding tyre quality, please do not hesitate to contact the tyre dealers or us to enable solving the problems immediately.

